

THE

2296 SQ. FT. TWO-STORY

BAY RIDGE

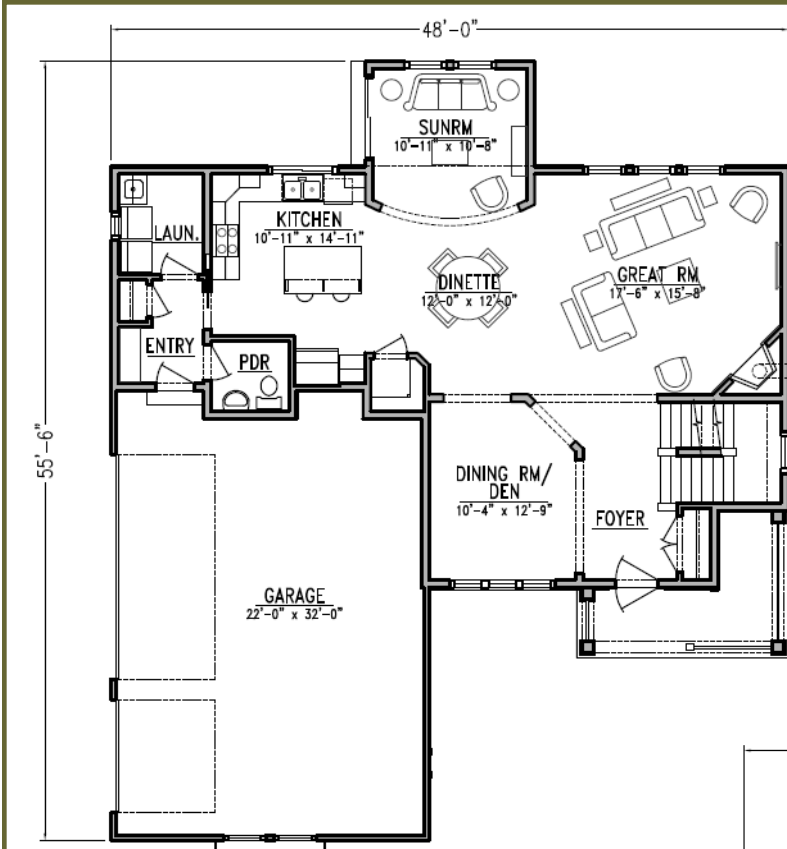


EXCEPTIONAL DESIGN ~ ~ EXCEPTIONAL VALUE

Kettle Creek Homes has earned a solid reputation for state-of-the-art designs, stunning architectural details and customized features uniquely tailored for each of our clients. Imagine, your home, an exquisite blend of impeccable design and unsurpassed elegance, constructed with the finest building materials and the most skillful craftsmanship. A home that comes along once in a lifetime for those who strive to make their dreams a reality.

We invite you to start the process—begin with the *Bay Ridge* floor plan, add the inspiration of your dreams, and allow us to help you turn your dream home into reality. Experience the Kettle Creek Homes difference — exceptional design, superb craftsmanship, outstanding customer service and superior value . . .

THE BAY RIDGE

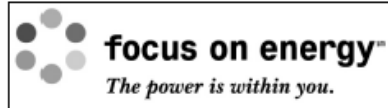


FIRST FLOOR PLAN

1 2 1 6 S. F.

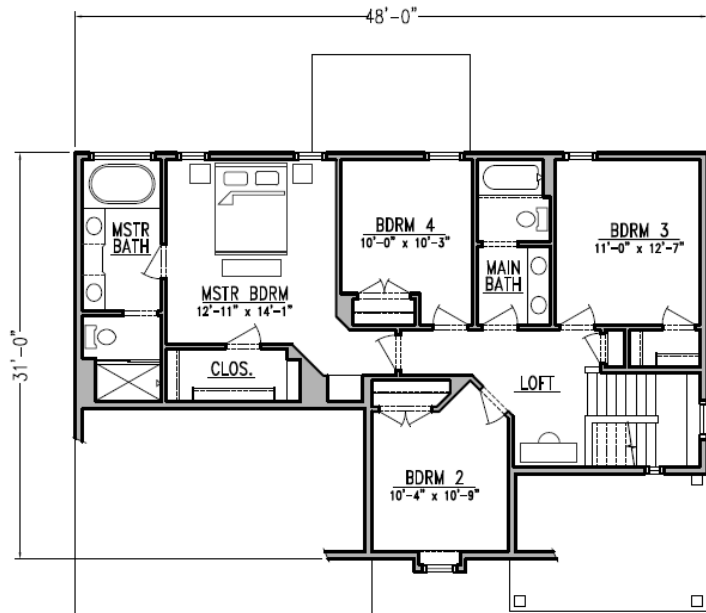
*Shown with optional
3-car garage

THIS HOME IS BUILT TO THE STANDARDS
OF THE FOCUS ON ENERGY PROGRAM



SECOND FLOOR PLAN

1 0 8 0 S. F.



Room sizes are approximate and subject to change at Kettle Creek Home's discretion. This plan constitutes the legal property of Kettle Creek Homes, LLC and the use of or copy of these plans or the creation of any derivation thereof without the express written consent of Kettle Creek Homes is strictly prohibited and constitutes a violation of Kettle Creek Home's proprietary and/or copyright interests. Revised 2-18-2011

Kettle Creek's award winning design team is always happy to accommodate your ideas and add those special custom touches to make this house truly your own. You might also want to consider choosing one of these Pre-Designed Options:

Alternate Elevations

Gourmet Kitchen

Deluxe Master Bath

Three-Car Garage

Finished Lower Level

